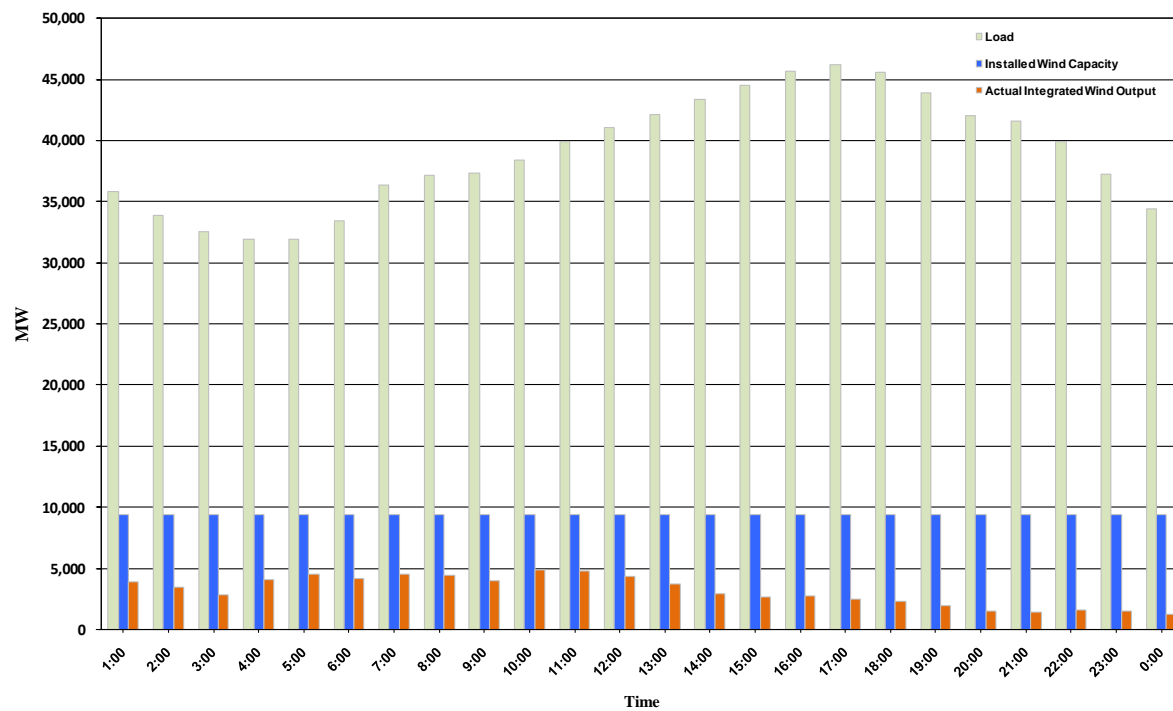




ERCOT Grid Operations Wind Penetration Report: 09/03/10

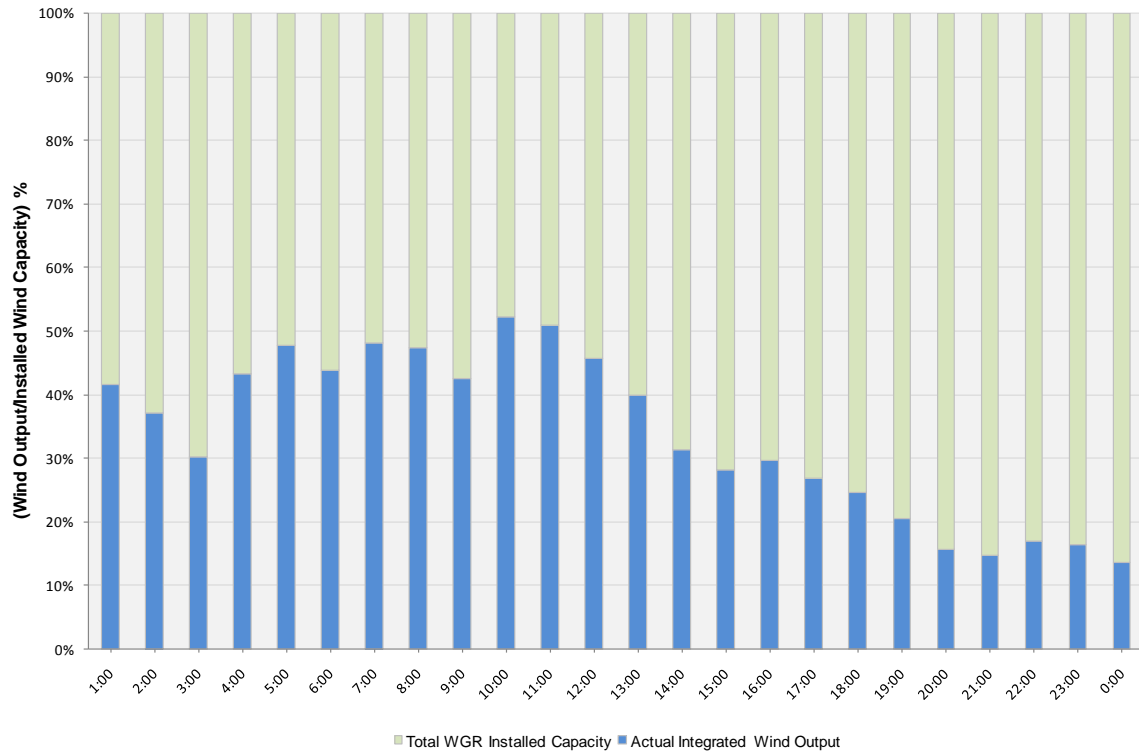
Peak Load	43,174 MW
Load Peak Hour	17
Wind Record 06/12/10	7016 MW
Max Wind value	5214 MW
Wind Peak Hour	10:22:52
Wind Penetration %	13.12

Hourly Average Actual Load vs. Actual Wind Output
09-03-2010

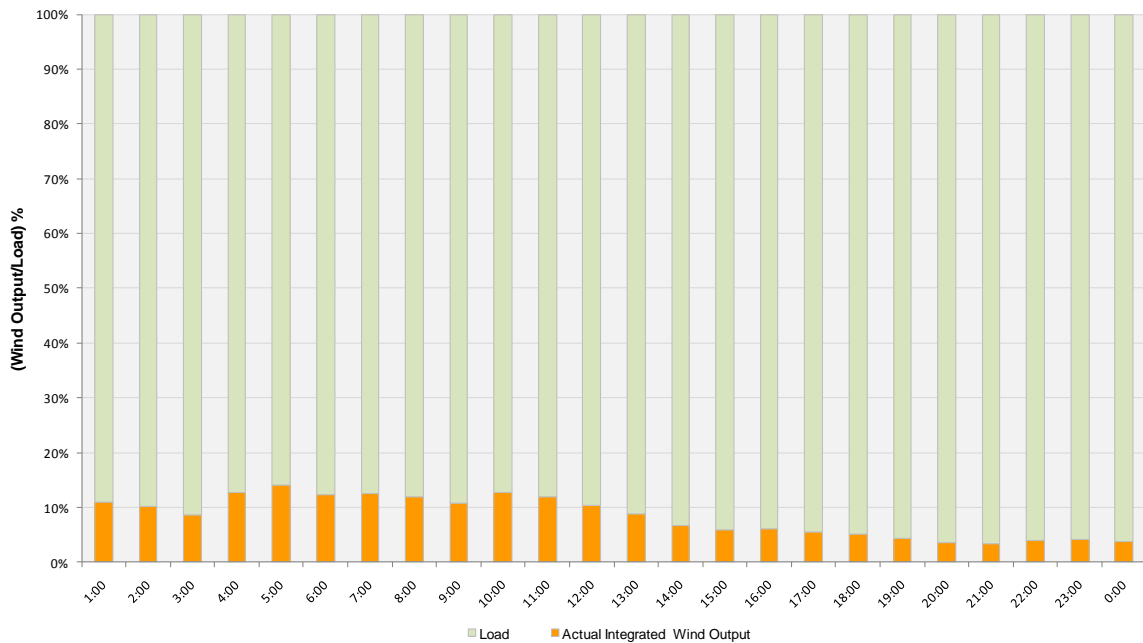




Actual Wind Output as a Percentage of the Total Installed Wind Capacity
09-03-2010



Actual Wind Output as a Percentage of the ERCOT Load
09-03-2010





ERCOT Load vs. Actual Wind Output 08/27/10 - 09/03/10

